

[Browse Product Range >](#)

Westfield Fasteners Product Specification:

Bonded EPDM Washers

This product guide contains our specification for bonded EPDM washers, a range of sealing washers available from Westfield Fasteners.

Product Description

Bonded sealing washers are used with many types of bolts and screws, including countersunk bolts and self drilling screws. As the screw is tightened, the EPDM rubber on the sealing washer compresses to form a water and air tight seal between the screw and the bearing surface. Bonded sealing washers are widely used in the construction and solar industries.

EPDM (Ethylene Propylene Diene Monomer) is a long-lasting synthetic rubber, which maintains its flexibility and sealing properties at high and low temperatures. It is resistant to UV radiation making it suitable for roofing and outdoor plumbing and electrical structures. EPDM also has good chemical resistance and useful electrical and sound insulation properties.

These bonded washers are available in a broad range of inner and outer diameters, to suit a multitude of applications. See figure 1 and table 1 for details.

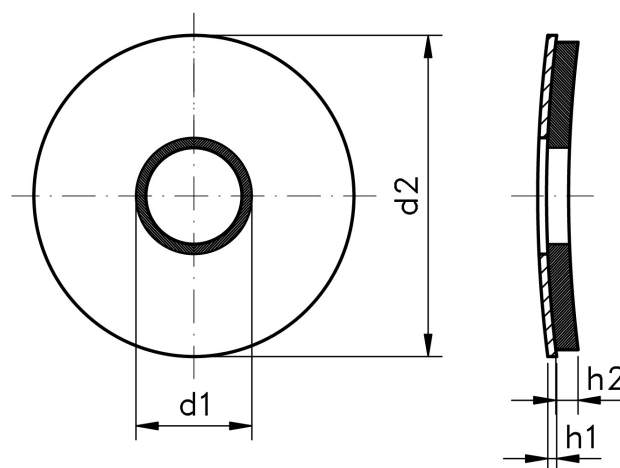


Figure 1: Bonded EPDM Washer

Table 1: Bonded EPDM Washers, Dimensions & Tolerances (mm)

d1	d2	d3	h1	h2
4.8	12	3.4	0.8	2
	14			
5.3	12	3.8		
	14			
	16			
	19			
6.2	16	4.2		
6.7	16	5.2		
	19			
	22			
	25			
	29			
8.4	16	7		
	19			
	22			
	25			
	29			
10.5	25	8.8		
	29			
13	29	11		