



[Browse Product Range >](#)

Westfield Fasteners Product Specification:

DIN 444L - Swing Bolt / Eye Bolt Type B with Full Thread

This product guide contains the specification for metric full thread swing bolt type B. These items are also known as swing bolts, and are a series of standard parts available from Westfield Fasteners. The basis of this specification is the German DIN standard DIN 444L, the recognised international standard.

Product Description

Metric full thread swing bolts, or commonly referred to as eye bolts type B. Ideal for gates, anchoring hooks, attaching rope wire and cables to solid surfaces, such as wood, metal, concrete, etc. Stainless steel variants offer good corrosion resistance and durability, with A4 / 316 grade being perfect for marine, food, medical, pharmaceutical and industrial environments.

Scope of DIN standard.

DIN 444L specifies the dimensions, tolerances and form for these eye bolts, with sizes from M5 up to and including M39.

DIN 444L specifies manufacture of steel, in strength classes 4.6 and 5.6. Stainless steel is not specifically mentioned, but the parts are available in A2 and A4 Stainless Steel. The Standard specifies that variants are available in partial and full thread with the full thread variants being marked as DIN 444L.

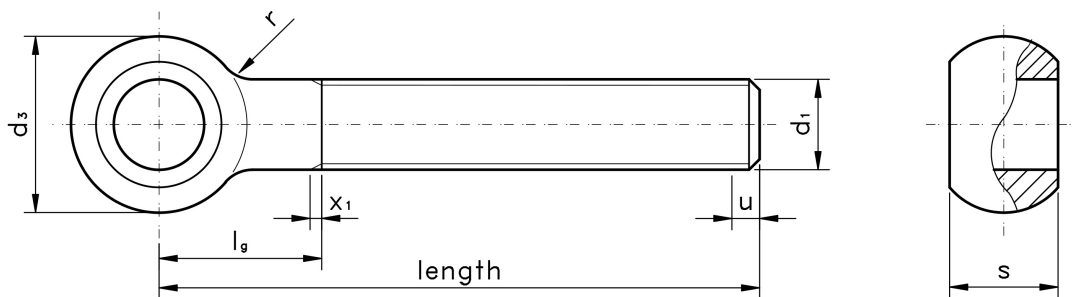


Figure 1: Swing Bolt / Eye Bolt Type B with full thread

Notes to figure 1:

- u - There may be up to 2 incomplete threads at the end of the bolt.
- x1 - thread run out according to DIN 76-1

Table 1: Dimensions & Tolerances of metric full thread swing bolt type B, according to DIN 444L (mm)

Thread, d		M5	M6	M8	M10	M12	M16	M20	M24	M27	
Thread Pitch, p		0.8	1	1.25	1.5	1.75	2	2.5	3	3	
b +2p/0	length ≤ 125mm	16	18	22	26	30	38	46	54	60	
	length > 125mm, ≤ 200mm	-	-	28	32	36	44	52	60	66	
	length > 200mm	-	-	-	-	49	57	65	73	79	
d ₂	nom. = min.	5	6	8	10	12	16	18	22	24	25
	max.	5.030	6.030	8.036	10.036	12.043	16.043	18.043	22.052	24.052	25.052
d ₃	max.	12	14	18	20	25	32	40	45	50	
	min.	11.57	13.57	17.57	19.48	24.48	31.38	39.38	44.38	49.38	
l _g		11	14	16	18	23	27	32	40	42	
r	nom.	2.5	4	4	4	6	6	6	10	10	
	max.	3.75	6.0	6.0	6.0	9.0	9.0	9.0	15.0	15.0	
	min.	1.875	3.0	3.0	3.0	4.5	4.5	4.5	7.5	7.5	
s	max.	6	7	9	12	14	17	22	25	27	
	min.	5.88	6.85	8.85	11.82	13.82	16.82	21.79	24.79	26.79	

Table 1: Dimensions & Tolerances of metric full thread swing bolt type B, according to DIN 444L (mm) Continued.

Thread, d				M30	M33	M36			M39
Thread Pitch, p				3.5	3.5	4			4
b +2p/0	length ≤ 125mm			66	-				
	length > 125mm, ≤ 200mm			72	78	84		90	
	length > 200mm			85	91	97		103	
d ₂	nom. = min.		27	28	30	32	33	35	36
	max.		27.052	28.052	30.052	32.062	33.062	35.062	36.062
d ₃	max.			55	60	65			70
	min.			54.26	59.26	64.26			69.26
l _g				46	54	59			61
r	nom.			10	16	16			16
	max.			15.0	22.4	22.4			22.4
	min.			7.5	12.8	12.8			12.8
s	max.			30	34	38			41
	min.			29.79	33.75	37.75			40.75

Table 2: Shank Length Tolerance according to DIN 444L (mm)

Length	Tolerance +/-
20-30	0.65
35-50	0.8
55-80	0.95
90-120	1.1
130-150	1.25
160-180	1.25
200-240	1.45
260-300	1.6

For further details, please refer to the DIN standard document for this item.

E&OE