



## Westfield Fasteners Assortment

[Browse Product Range >](#)

# A2 Double Ear Hose Clamps

## Product Description

A mixed box containing a variety of double ear hose clamps in A2 stainless steel. See Figure 1 and Table 1 below for dimensions.

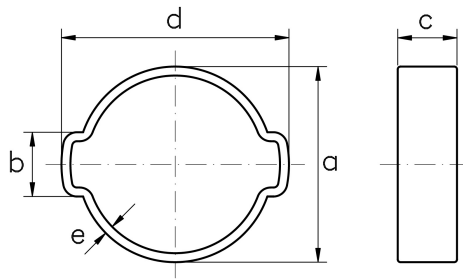


Figure 1: Double Ear Hose Clamp in A2 Stainless Steel

## Assortment Content

Type - Metric

Material - A2 Stainless Steel (W4)

Sizes - 7-9mm to 15-18mm

Average Contents - 75 pcs

Table 1: Product Dimensions for Double Ear Hose Clamps (mm)

Size (Range)	a	b	c	d	e
5-7	7.3	4.3	6.0	11.5	0.6
7-9	9.3	4.8	6.0	14.5	0.8
9-11	11.3	5.3	6.5	16.5	0.8
11-13	13.3	5.8	6.5	19.0	0.8
13-15	15.3	6.3	7.0	21.5	1.0
14-17	17.5	6.6	7.0	24.0	1.0
15-18	18.5	7.0	7.5	25.0	1.0
17-20	20.5	7.6	7.5	27.0	1.0
18-21	21.5	7.9	8.0	28.5	1.0
20-23	23.5	8.5	8.0	30.5	1.0
22-25	25.5	9.1	8.5	33.5	1.2

E&OE