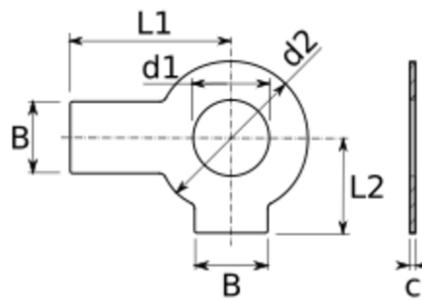




## Tab Washers to DIN 463

Tab washers, also known as long tab wing washers are a type of locking washer, conforming to DIN 463. These washers have two tabs that can be folded around a bolt head or nut forming a mechanical locking solution between the bolt or nut and the adjoining surface. Used in situations where there is heavy vibration or in extreme heat conditions. The tab washer negates the need for a locking pin, castle or slotted nut.



d1	for	d2	c	L1	L2	B
4.3	M4	9.0	0.38	14	6.5	5
5.3	M5	10.0	0.50	16	8.0	6
6.4	M6	12.5	0.50	18	9.0	7
8.4	M8	17.0	0.75	20	11.0	8
10.5	M10	21.0	0.75	22	13.0	10
13	M12	24.0	1.00	28	15.0	12
15	M14	28.0	1.00	28	16.0	12
17	M16	30.0	1.00	32	18.0	15
19	M18	34.0	1.00	36	20.0	18
21	M20	37.0	1.00	36	21.0	18
23	M22	39.0	1.00	42	23.0	20
25	M24	44.0	1.00	42	25.0	20
28	M27	50.0	1.60	48	29.0	23
31	M30	56.0	1.60	52	32.0	26
34	M33	60.0	1.60	56	34.0	28
37	M36	66.0	1.60	60	38.0	30
40	M39	72.0	1.60	64	41.0	32