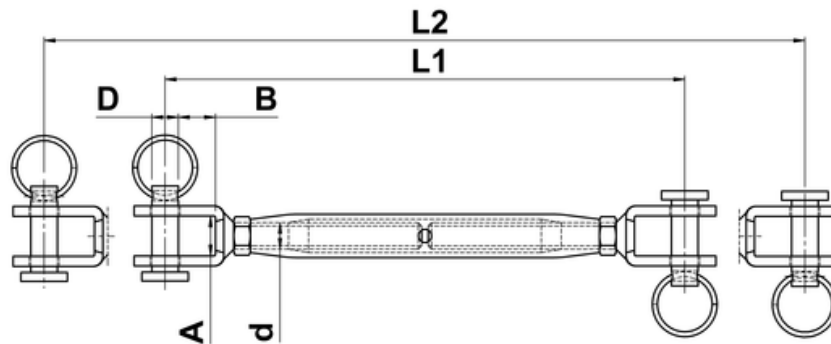




Turnbuckle with Closed Body and Welded Forks

Turnbuckle, used to ensure and adjust tension on roped, cabled, wired or rod systems. Mainly rectangular in shape with threaded inserts at either end. Each end are threaded in opposite directions so that when you rotate the body of the turnbuckle one way tension will be increased, rotate the other way and tension will be released. A versatile fixing which allows for adjustments in precise increments. Uses include boat rigging, tensioning fences, lifting rigs, theatre rigging and even on boxing/wrestling rings! - this version consists of two welded forks (jaws) with a closed body.



d	L1	L2	D	A	B
M5	130	190	5	6.5	10
M6	150	220	6	7.5	10
M8	165	240	8	11.0	11
M10	190	280	9	12.0	14
M12	245	360	12	14.0	20
M14	270	390	12	15.0	22
M16	310	450	16	17.0	26
M20	360	510	19	20.0	30