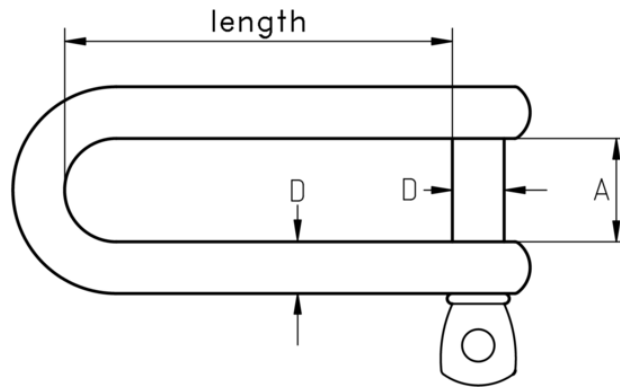




Long D Shackle

D shaped shackle with a longer body. For use in a multitude of lifting and rigging systems.



D (mm)	A (mm)	Length (mm)	Approx Breaking Load kN
4	8	32	6.50
5	10	37	8.00
6	12	45	12.00
8	16	60	20.00
10	20	75	40.00
12	24	90	48.00