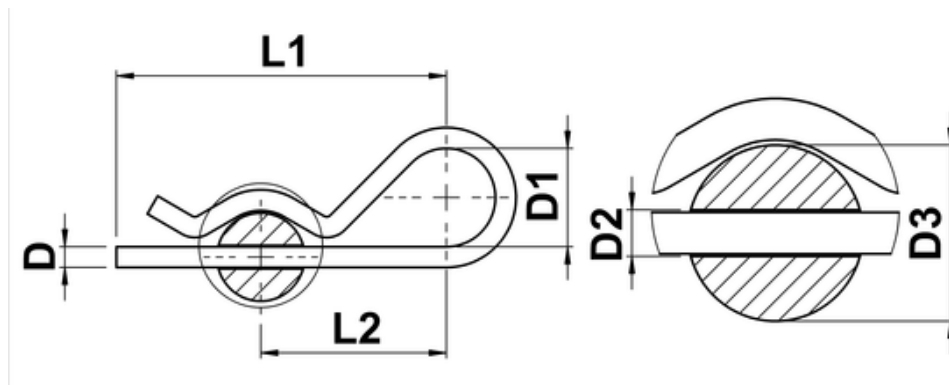




R-Clips (Euro Pattern)

R Clips, also known as R Keys, R Pins or Hitch Pins. Often used to secure ends of round shafts such as clevis pins or axles. Re-usable and made from A2 grade stainless steel, they can be viewed as a better option than split pins as they are easier to remove whilst essentially doing the same job.



d	d2	d1	d3	l1	l2
2	2.5	10	8 - 12	40	25
2.5	3.0	11	> 10 - 16	46	24
3	3.5	16	> 16 - 18	60	34
4	4.5	19	> 18 - 20	64	36
5	6.0	26	> 20 - 28	82	45
6	7.0	30	> 28 - 40	110	60