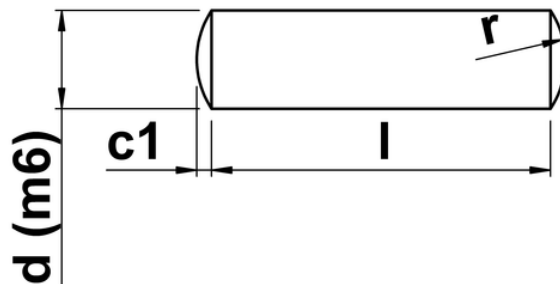




Dowel Pin (DIN 7)

Our stock of Dowel Pins are short cylindrical sections of metal cut from a Dowel Bar. For use in aligning machinery parts correctly and often as reference points for mechanical engineers to ensure repeatable and accurate assemblies.



d	C	r
1	0.15	1.0
1.5	0.23	1.6
2	0.30	2.0
2.5	0.40	2.5
3	0.45	3.0
4	0.60	4.0
5	0.75	5.0
6	0.90	6.0
8	1.20	8.0
10	1.50	10.0
12	1.80	12.0
16	2.50	16.0
20	3.00	20.0