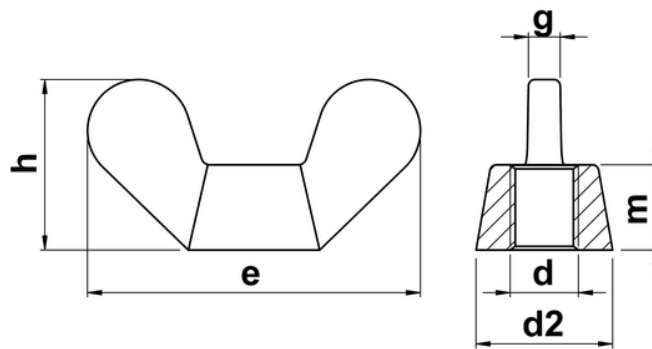




## Wing Nuts German Form

Popularly employed where frequent hand tightening and untightening of joints is required. To the German Form with slightly larger, rounded wings. To DIN 315. Please note that due to manufacturing limitations, all nylon variants of these items are only "similar to" and not "in absolute accordance with" the standard specified.



d	thread pitch	m min.	m max.	h min.	e min.	d2	g min.
M4	0.70	3.2	4.6	8.5	18	6	1.7
M5	0.80	4.0	6.5	11.0	24	8	2.3
M6	1.00	5.0	8.0	15.0	30	10	2.7
M8	1.25	6.5	10.0	18.0	36	13	3.6
M10	1.50	8.0	12.0	23.0	48	17	4.6
M12	1.75	10.0	14.0	31.0	62	20	5.6
M16	2.00	13.0	17.0	35.0	70	26	6.5
M20	2.50	16.0	21.0	44.0	86	32	7.0