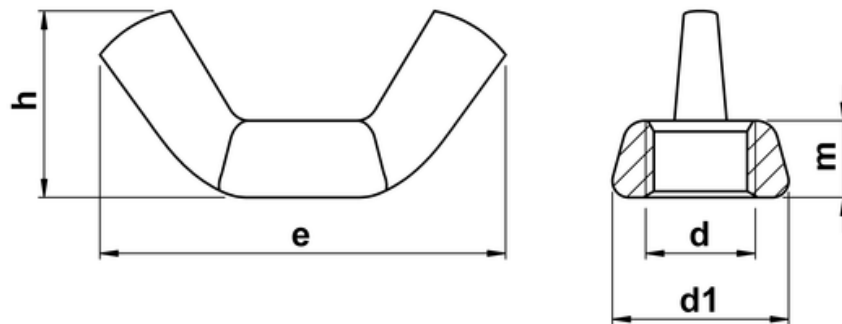




UNF Wing Nuts

Popularly employed where frequent hand tightening and untightening of joints is required. To ASME B18.6.9.



d	tpi	m	h	d1
4-48	48	0.14	0.410	0.33
5-44	44	0.14	0.410	0.33
6-40	40	0.14	0.410	0.33
8-36	36	0.18	0.470	0.43
10-32	32	0.18	0.470	0.43
12-28	28	0.22	0.570	0.50
1/4	20	0.22	0.570	0.50
5/16	18	0.25	0.660	0.58
3/8	16	0.30	0.790	0.70
7/16	14	0.39	1.00	0.93
1/2	13	0.39	1.00	0.93
5/8	11	0.55	1.44	1.19
3/4	10	0.55	1.44	1.19