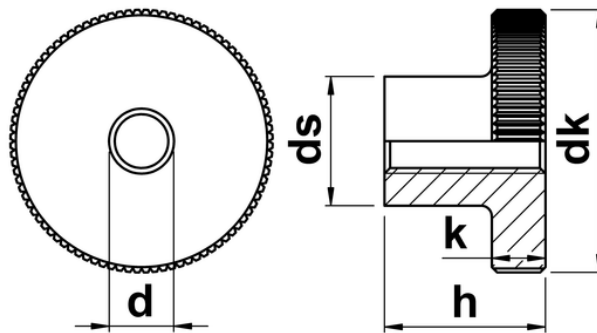




## Thumb Nuts High Type DIN 466

Knurled Thumb Nuts manufactured to DIN 466. These examples are the high profile thumb nuts and feature knurling for a more assured grip. Made from machineable A1 grade stainless steel, so benefitting from good anti-corrosion properties. Designed to be located and fitted by hand, even in more challenging applications and giving an attractive finish when used.



d	thread pitch	dk	ds	h	k
<b>M2.5</b>	0.45	11	5	6.5	2.5
<b>M3</b>	0.50	12	6	7.5	2.5
<b>M4</b>	0.70	16	8	9.5	3.5
<b>M5</b>	0.80	20	10	11.5	4.0
<b>M6</b>	1.00	24	12	15.0	5.0
<b>M8</b>	1.25	30	16	18.0	6.0
<b>M10</b>	1.50	36	20	23.0	8.0