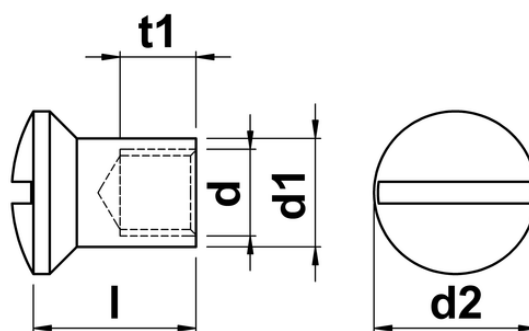




## Sleeve Nuts With Pan Head and Slot

Slotted Sleeve Nuts also known as Slotted Barrel or Case nuts. These examples have a slotted raised/oval countersunk head. Internally threaded and giving a smooth flush attractive finish they require a standard flat head screwdriver for fitting. Available in A2 stainless steel, giving great corrosion resistance.



d	thread pitch	d1	d2	l	t1	drive
M4	0.70	5.0	7	15	8	1.2X7.0
M5	0.80	6.5	9	13/15	9	1.2X7.0
M6	1.00	7.5	10	13/15	9	1.6X9.0
M8	1.25	10.0	15	15	7	2.0X12.0