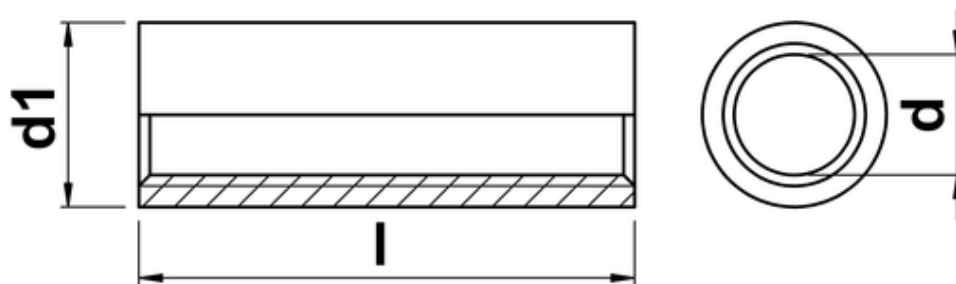




## Round Coupler Nut

Round Coupling Nuts similar to DIN 6334 but with a smooth rounded finish as opposed to hexagonal. Used when connecting two pieces of threaded bar/studding. Please note that these items are not produced to a recognised standard and therefore some dimensions may vary.



<b>d</b>	<b>thread pitch</b>	<b>d1 (typical)</b>
<b>M6</b>	1.00	10
<b>M8</b>	1.25	11
<b>M10</b>	1.50	12.5 - 13
<b>M12</b>	1.75	15
<b>M16</b>	2.00	22 - 25
<b>M20</b>	2.50	28
<b>M24</b>	3.00	32
<b>M30</b>	3.50	40